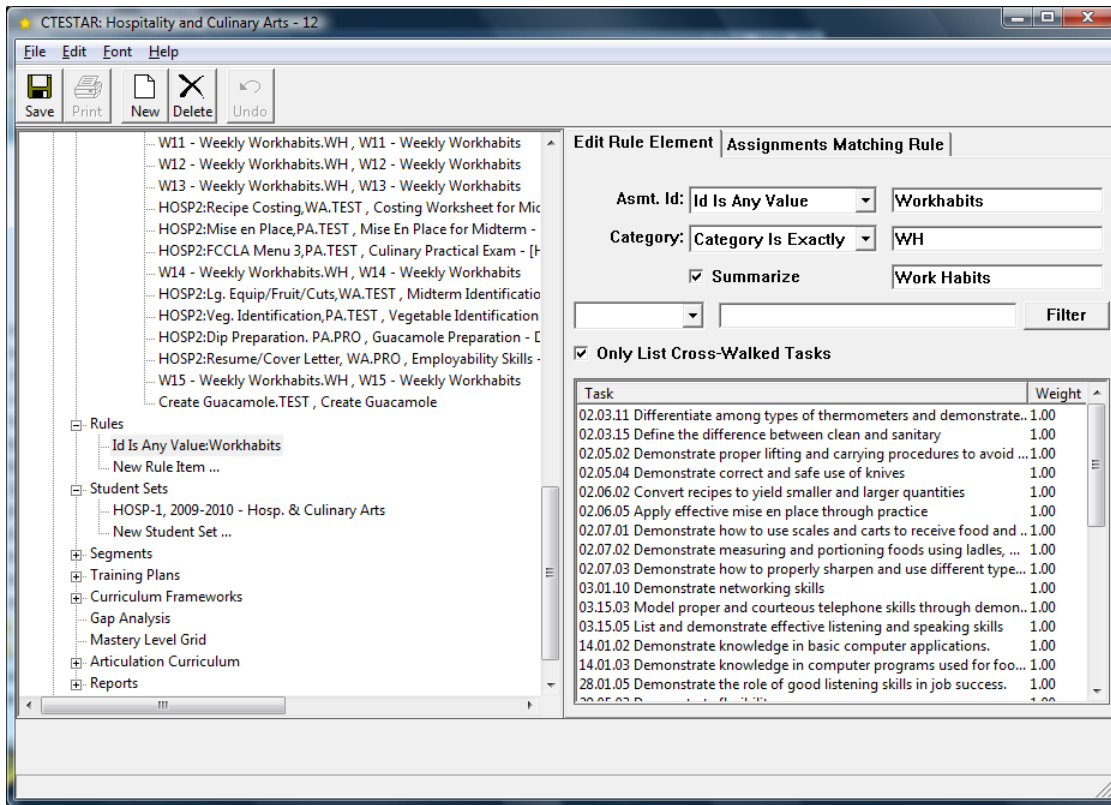
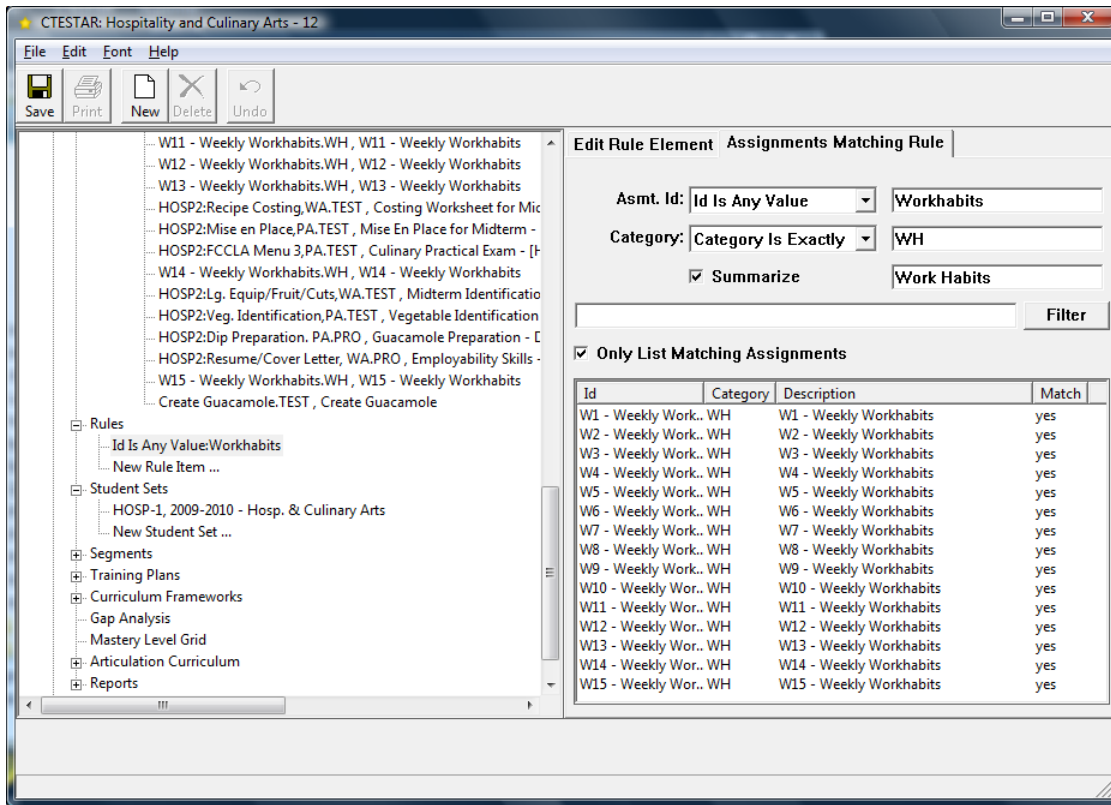


# CTESTAR® Edit Rule Element



- 1) Editable on *Edit Rule Element* tab
- 2) Rules Match Assignment Id's or Assignment Categories or a combination of both.
- 3) Assignment Id Match Options: *Exact, Begins With, Contains, Ends With, Any*
- 4) Category Match Options: *Exact, Any*
- 5) *Summarize* checked if assignment will be summarized in reports  
Summarization Title in field to right
- 6) Edit the list of Tasks Cross-Walked with this Rule by entering non-zero weights
- 7) *Only List Cross-Walked Tasks* check-box lists tasks with non-zero weight
- 8) *Assignments Matching Rule* tab displays matching assignments
- 9) Rules applied on *Update Curriculum*
- 10) Values applied by prior rules cleared before applying any rules
- 11) *Filter* and *Segment* work as on other cross-walk tabs
- 12) Confirm assignments matching rule on *Assignments Matching Rule* tab

# CTESTAR® Assignments Matching Rule



- 1) View matching Assignments on *Assignments Matching Rule* tab
- 2) *Only List Matching Assignments* check-box limits assignments listed
- 3) Rule specifications are not editable from this tab
- 4) Summarization fields are not editable from this tab
- 5) *Filter* and *Segment* work as on other cross-walk tabs
- 6) Edit rule on *Edit Rule Element* tab